



# *In Vitro* and *In Silico* Evaluation of *Brugmansia suaveolens*' Ability to Treat Asthma

Shouvik Kumar Nandy  , Shikha Thakur

[The author informations are in the declarations section. This article is published by ETFLIN in Sciences of Phytochemistry, Volume 2, Issue 1, 2023, Page 121-130. <https://doi.org/10.58920/sciphy02010159>]


**Received:** 10 April 2023

**Revised:** 30 May 2023

**Accepted:** 01 June 2023

**Published:** 01 June 2023

**Editor:** James H.  
Zothantluanga

 This article is licensed under a Creative Commons Attribution 4.0 International License. © The author(s) (2023).

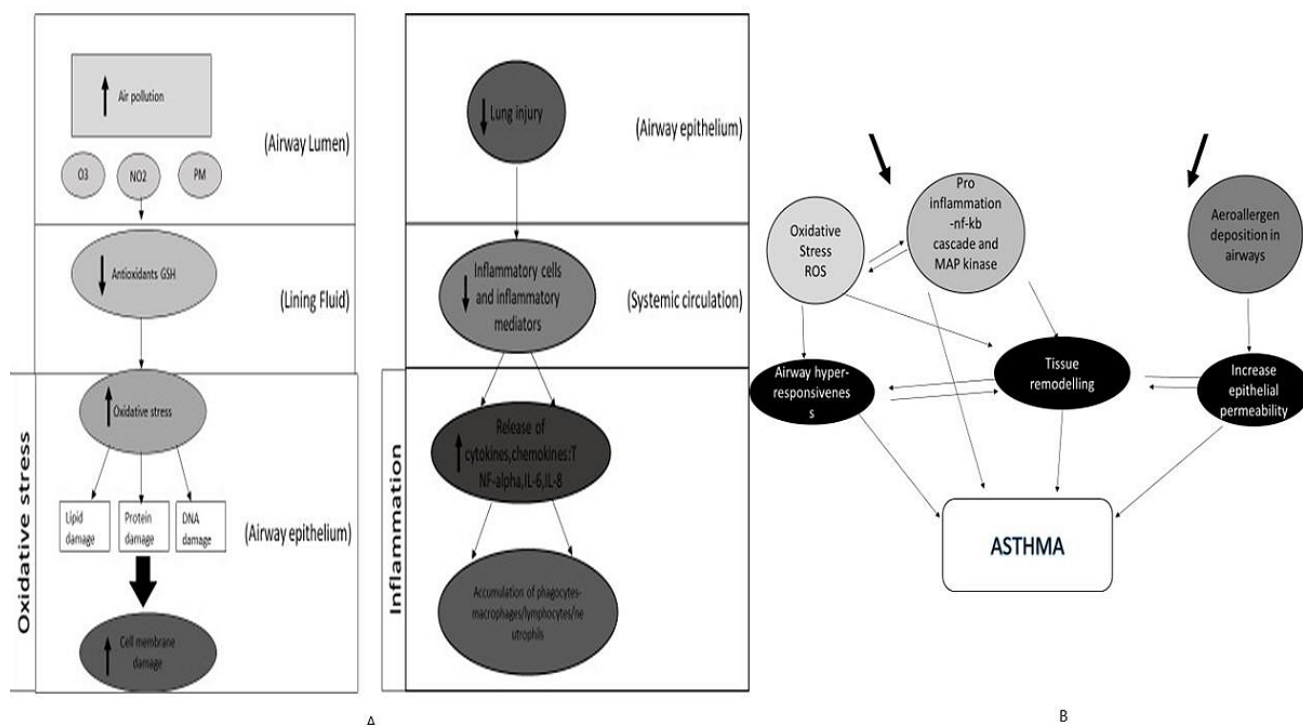
**Keywords:** *Brugmansia suaveolens*, Hyoscine, Norhyoscine, Anti-inflammatory, Atropine.

**Abstract:** Asthma is a common chronic inflammatory disease of the airways. The airway epithelium produces bioactive cellular mediators that trigger the chronic inflammatory response. These mediators then attract and activate inflammatory cells in the airways of the lungs and release more biochemical mediators. With several benefits, such as a significant reduction in the cost and time of drug discovery as well as the use of laboratory animals, *in silico* studies have grown to be an important and simple method for examining various chemical compounds against various targets. One of the common herbs found in the local Himalayan area is *Brugmansia suaveolens*, known as Datura, which is a source of tropane alkaloids and asthma can be effectively managed with alkaloids. Using a Soxhlet extractor, the collected plant components were first extracted with petroleum ether (to remove fats) followed by methanol. Online technologies like PASS Online, Molinspiration, SEA, SWISS, and SLAP data were used for a variety of *in silico* predictions. After that, we tested the ability of *Brugmansia* extracts to reduce inflammation using an *in vitro* approach. Rat RBC membrane lyses were stabilized using the plant extract fractions. The outcomes were also compared with aspirin (a common anti-inflammatory drug). Bioinformatics techniques were used to detect structural activity. After investigating all the data It was shown that *B. suaveolens* had anti-asthmatic activity.

## Introduction

Chronic respiratory disease is one of the main causes of mortality and morbidity worldwide. People of all ages are susceptible to asthma, a common chronic inflammatory disease of the airways. With more than 300 million people currently suffering from asthma worldwide, the burden of asthma is enormous (1). It has long been believed that asthma is the classic T helper type 2 (TH2) illness of the airways due to the high eosinophil count in the airways of persons with moderate asthma and results from mouse models. It is now known that some eosinophilic inflammation and some neutrophilic inflammation in asthma are controlled by type 2 innate lymphoid cells (ILC2 cells) acting in performance with basophils (2). The link between the main causes of asthma, airway inflammation, and oxidative stress in asthma is

depicted in **Figure 1**. Exposure to external agents, such as allergens found indoors and outdoors, air pollutants like O<sub>3</sub>, NO<sub>2</sub>, PM (particulate matter), and respiratory tract infections, as seen in **Figure 1A**, are the most frequent causes of these conditions. Oxidative stress is the phrase used to describe the imbalance between oxidants, such as reactive oxygen species (ROS) and reactive nitrogen species (RNS), and antioxidants in favour of oxidants after exposure. This illness could be categorized as a heterogeneous disorder. The primary environmental factors influencing the physiopathology of asthma are sensitization to dust, pollen, and diet. T lymphocytes and eosinophils release pro-inflammatory cytokines such as tumor necrosis factor- $\beta$  (TNF- $\beta$ ), interleukins IL-2, IL-3, IL-4, IL-5, prostaglandins, histamine, and leukotrienes in response to antigens recognized by mast cells covered by IgE antibodies (**Figure 1B**).



**Figure 1.** Cellular mechanisms underlying the inflammation and oxidative stress in asthma. (A) The effect on airways after exposure to common external agents (air pollutants) such as O<sub>3</sub>, NO<sub>2</sub>, and PM; (B) Secondary mechanisms of pro-inflammation and aeroallergen deposition airway re-modeling that are involved in asthma.

*In silico* studies have developed into a substantial and straight forward tool for analyzing diverse chemical compounds against numerous targets, with many advantages, including a significant decrease in the cost and time of drug discovery as well as the use of laboratory animals (3). There are a lot of pharmacologically active chemicals found in medicinal plants. Pharmaceutical components that can be employed in the creation of new drugs can be found in abundance in medicinal plants (4, 5). Beyond that, these plants have a big impact on how human societies have evolved all around the world. Anything about the biological function of possible drug candidates, including sequence-based properties and interactions with bodily structures, is considered a part of bioinformatics methods for drug development (6).

Bioinformatics methods for drug discovery include anything related to the biological function of potential drug candidates, including sequence-based characteristics, interactions with body structures (metabolites, proteins, cells, tissues, etc.), pathway perturbations, and toxicity, among others. Multi-omics and high-throughput sequencing are also major areas within bioinformatics (7). In the case of natural products; researchers make use of an entire range of techniques related to the organisms that produce the compounds. Drug discovery enabled by bioinformatics and computational methods is an increasing shift toward data-driven drug discovery. Traditionally, drug discovery has been performed as follows: scientists

first find a target structure in the human body related to a disease or illness, followed by screening for “lead” compounds that show an affinity for the target. Although natural drug discovery has always been a hallmark activity in pharmacology, pharmaceutical researchers have only applied these chemo-informatics techniques to natural products recently (8).

This plant has been used in traditional medicine throughout cultures as a muscle relaxant, nematocide, aphrodisiac, hallucinogen, and treatment for inflammation, rheumatism, asthma, and allergies (10). Different chemical substances have been detected in the plant's flowers, fruits, stems, and roots, including alkaloids, volatile chemicals mostly terpenes, coumarins, flavonoids, steroids, and hydrocarbons. This medicinal species has been the subject of chemical investigations since 1996 (11). These investigations were the first qualitative research on particular classes of substances, which included amines, sugars, alkaloids, phenolic compounds, flavonoids, steroids, terpenoids, tannins, anthraquinone glycosides, saponins, and triterpenes (12). The ethanolic extract of the flowers was also used to quantify the alkaloids ( $5.903 \pm 0.01333$  mg/g), phenolic compounds ( $3.435 \pm 0.0110$  mg/g), and flavonoids ( $9.945 \pm 0.0256$  mg/g) (13). The concentrations of these substances can alter, much like the volatile chemical profiles of living flowers, which are constantly changing due to both internal (genetic) and environmental (light, temperature, and water stress) variables. The loss of

volatile chemicals and rapid deterioration are problems with cut flowers (14).

In the present study, our attention is on the anti-inflammatory process and the application of herbal plants that have anti-inflammatory properties. This study looks at the most recent information available in various search engines regarding the distribution, phytochemistry, pharmacology, and toxicology of *B. suaveolens* (Solanaceae) using chemical compounds or extracts at this time (9). To detect structural activity, we employed bioinformatics tools like PASS Online, Molinspiration, SEA, SWISS, and SLAP data. Data from these three phytoconstituents were compared to Phytoconstituents from *B. suaveolens* (15, 16). We evaluated *B. suaveolens* fractions and their *in vitro* anti-inflammatory assay. We intended to conduct the anti-oxidative and the anti-inflammatory assays for all fractions, however, Covid-19 prevented us from doing so (17).

## Experimental Section

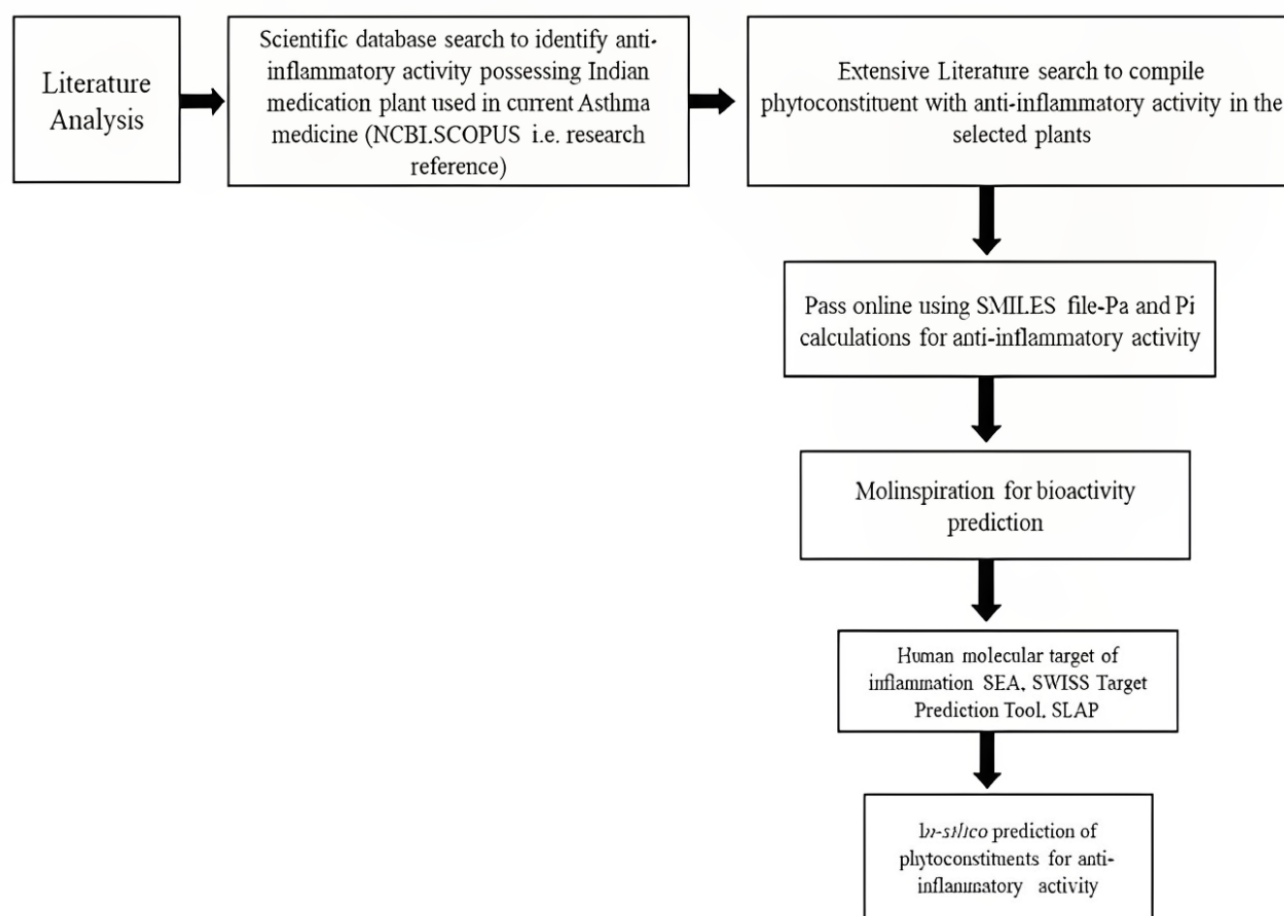
### Materials and Methods

#### Materials for *In Silico* Approach With the Anti-

#### Inflammatory Phytoconstituents

**Databases:** We used biological databases such as PubChem, PDB (Protein Data Bank), and NCBI for a literature search for anti-inflammatory, Phytoconstituents in Indian medicinal plants used in asthma.

**Software:** Online tools were used for various *in silico* predictions. PASS software was used to predict the biological activities of Phytoconstituents (9). Molinspiration software was used to predict the bioactivity score of the compounds against human molecular targets/ receptors such as GPCRs, ion channels, kinases, nuclear receptors, proteases, and enzymes (18-20). SEA is a tool for conducting structure-based fingerprint similarity searches and returns a ranked list of predictions, and comparative information on ligands known to share those targets (20). SWISS target returns a list of targets, with links to the relevant ChEMBL and Uniprot records, ranked by the pseudo-probability of ligand-targeted interaction (7). In SLAP, we sought to use such semantic methods to integrate and annotate the data about drug-target interaction (19).



**Figure 2.** Methodology for our bioinformatics studies: The different tools used to identify anti-inflammatory activity are shown in the figure. PASS software, Molinspiration, SEA, SWISS Target, and SLAP software are used to predict Phytoconstituents to identify anti-inflammatory activity.

## Materials for *In Vitro* Approach

### Collection of Plant Material

Plants were collected from several areas in Kolkata during October and November.

### Chemicals and Instruments

Methanol, petroleum ether, chloroform, ethyl acetate, n-butanol, sodium chloride, and aspirin were used. Centrifuge, electronic balance, and UV-VIS double beam spectrophotometer were used.

## Methods for *In Silico* Approach

### Retrieval of Phytochemicals and Target Protein

Firstly, we chose an anti-asthmatic formulation used in the market. Then we identified herbs in these formulations and categorized them based on their anti-inflammatory activity. The anti-inflammatory activities of herbs were collected in the literature analysis. Literature searches were based on experimentally determined properties. We chose phytoconstituents such as cinnamaldehyde, piperine, and linolenic acid for further studies and standardization of the chosen parameters.

Protein Data Bank (PDB) archive is the single worldwide repository of information about the 3D structures of large biological molecules. 3D structures were downloaded in SDF format and canonical smiles were downloaded. 3D structures in SDF format were converted to PDB format.

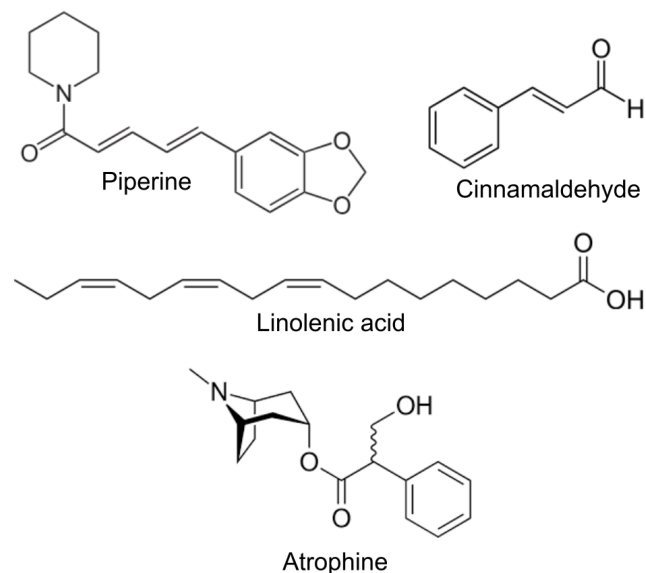
### PASS (Prediction of Activity Spectra for Substances)

PASS software was utilized to predict the interactions of phytochemicals with selected targets (see **Table 1**). PASS can be accessed from the site [www.way2drug.com/PASSOnline](http://www.way2drug.com/PASSOnline). PASS tool interpreted the biological active spectra using the 2D structure of molecules. PASS activity selected anti-inflammatory activity which has Pa (probability "to be active") greater than Pi (probability "to be inactive") and Pa greater than 0.5.

### Molinspiration, SEA, SWISS, and SLAP

The compounds were analyzed using the Molinspiration web tool based on Lipinski's Rule of Five ([www.molinspiration.com](http://www.molinspiration.com)). Along with this, the bioactivity score was also predicted. A similarity ensemble approach (SEA) was used to study the potential targets of the test compounds

(<https://sea.bkslab.org/>). Human targets related to inflammation were identified. Results showing Tanimoto coefficients (Tc) greater than 0.6 were selected. SWISS Target was used to study the potential human targets and a probability not to be less than 0.5 was used to collect significant data (<http://www.swisstargetprediction.ch/>). SLAP was also used to predict the targets of the test compounds and the benchmark *p*-value was set at 0.05 (<http://cheminfov.informatics.indiana.edu:8080/slap/>).



**Figure 3.** Structures of phytochemicals used for Molinspiration. The figure shows structures of Phytoconstituents used for this study. piperine, cinnamic aldehyde, and linoleic acid were used for forming a baseline. Phytoconstituents found in *Brugmansia*, atropine, and scopolamine (21).

### Methods for Extraction, Fractionation, and *In Vitro* Approach for the Anti-Inflammatory Assay

The leaves of *B. sauveolens* were subjected to shade drying. The dried plant material was further crushed to powder and stored in an airtight container for further analysis. The plant materials were first extracted with petroleum ether for defatting followed by methanol in the Soxhlet extractor. Further, the methanolic extract of the plant was fractionated with chloroform and ethyl acetate based on their polarity. The extracts and fractions were filtered and the solvent was evaporated to dryness over the hot water bath. All the dried extracts were kept in well-closed containers under refrigeration.





**Figure 4.** Extraction process in soxhlet apparatus and fraction of plant material in separating funnel using a solvent.

#### **In Vitro Anti-Inflammatory Activity Through Membrane Stabilization Assay**

**Preparation of Red Blood cell (RBC) suspension:** The Blood was collected from a healthy rat to the experiment and transferred to the centrifuge tubes. The tubes were centrifuged at 3000 rpm for 10 min and then washed three times with an equal volume of normal saline. The volume of blood was measured and reconstituted as a 10% v/v suspension with normal saline.

**Heat-Induced Hemolysis Assay:** The reaction mixture (2 mL) consisted of a 1 mL test sample at different concentrations and 1 mL of a 10% RBC suspension. For the control test tube, only saline was added instead of the test sample to ensure an accurate comparison. Aspirin was used as the standard drug to evaluate the protective effect against hemolysis. All centrifuged tubes containing the reaction mixture were incubated in a water bath at 56 °C for 30 minutes to induce hemolysis. After incubation, the tubes were immediately cooled under running tap water to halt the reaction. The samples were then centrifuged at 2500 rpm for 5 minutes to separate the supernatant. The absorbance of the supernatant was measured at 560 nm to assess the extent of hemolysis (22). This method helps determine the membrane-stabilizing properties of the test compounds and their potential anti-

inflammatory effects.

$$\text{Percent Protection} = 100 - \frac{OD_{\text{sample}}}{OD_{\text{control}}} \times 100\% \quad \text{Equation 1}$$

## **Results and Discussion**

**PASS Online:** The pharmacological effects of a compound and its communication with biological entities were predicted by PASS online by uploading the SMILES string of natural compounds. PASS prediction results showed that the highest Pa value than the Pi value comes off for anti-inflammatory activity and hence selected compounds. However, all compounds have shown a significant Pa value as compared to the Pi value.

We selected data with a Pa value greater than 0.5, as it indicates strong biological activity compared to Pi. The Pa value represents the probability of a compound exhibiting a particular activity, with higher values suggesting better potential effectiveness. The concept of the 'biological activity spectrum' provides a list of activity names that reflect a compound's interaction with biological entities. If  $P_a < 0.5$ , the compound is either unlikely to exhibit the activity or has a lower probability of doing so. In **Table 1**, cinnamaldehyde and linolenic acid demonstrated promising anti-inflammatory activity. Cinnamaldehyde had a highest Pa of 0.596 and Pi of 0.033, while linolenic acid had a highest Pa of 0.804 and Pi of 0.006.

**Table 1.** Biological activity spectrum of compounds- Pa (Active); Pi (Inactive).

Name of the compound	Pa	Pi	Activity
Cinnamaldehyde	0,596	0,033	Anti-inflammatory
	0,494	0,008	Anti-inflammatory, intestinal
	0,308	0,067	Anti-inflammatory, ophthalmic
	0,220	0,084	Non-steroidal anti-inflammatory agent
Piperine	0,314	0,060	Anti-inflammatory, intestinal
	0,344	0,127	Anti-inflammatory
	0,238	0,207	Anti-inflammatory, ophthalmic
Linolenic acid	0,804	0,006	Anti-inflammatory
	0,591	0,004	Anti-inflammatory, intestinal
	0,443	0,017	Non-steroidal anti-inflammatory agent
	0,373	0,017	Anti-inflammatory, ophthalmic

**Table 2.** Bioactivity scores of compounds tested. Imiquimod and acetyl-salicylic acid were used as standard anti-inflammatory chemicals.

Drug/ compound	GPCR ligand	Ion channel modulator	Kinase inhibitor	Nuclear receptor ligand	Protease inhibitor	Enzyme inhibitor
Piperine	0.15	-0.18	-0.13	-0.13	-0.10	0.04
Linolenic acid	0.33	0.23	-0.19	0.35	0.13	0.42
Cinnamaldehyde	-1.09	-0.39	-1.24	-0.96	-0.76	-0.46
Imiquimod	0.27	0.21	0.60	-0.77	-0.29	0.48
Acetyl salicylic acid	-0.76	-0.32	-1.06	-0.44	-0.82	-0.28

**Table 3.** SEA, SWISS, and SLAP data of Piperine.

Target	Swiss target	SEA		SLAP		
	Probability	p-value	Max TC	p-value	Score	Type
MAOB	1.0	1.229e-05	1.00	-	-	-
TRPV1	-	4.11e-07	1.00	-	-	-
CYP3A4	-	4.982e-07	1.00	-	-	-
CYP1A2	-	0.0002663	1.00	-	-	-
MMP1	-	-	-	0.003	530.34	Predicted
MMP9	-	-	-	0.004	404.92	Approved expression
MMP3	-	-	-	0.0027	576.78	Predicted
MMP8	-	-	-	0.0033	478.3	Predicted
MMP13	-	-	-	0.0034	473.05	Predicted
MMP2	-	-	-	0.0039	412.66	Approved expression
MMP14	-	-	-	0.0043	379.97	Predicted
ADAM17	-	-	-	0.0046	357.71	Predicted
MMP7	-	-	-	0.0059	286.68	Predicted
MMP11	-	-	-	0.0079	220.89	Predicted
MMP10	-	-	-	0.0099	181.1	Predicted
TNF	-	-	-	0.0197	96.75	Approved expression
IL1B	-	-	-	0.0266	73.58	Approved expression
IL6	-	-	-	0.0383	52.58	Approved expression
-	-	-	-	0.003	530.34	Predicted

The molecular properties of the compounds were calculated using Molinspiration chemo-informatics software and are presented in **Table 2** and **Table 3**. The Molinspiration tool retrieves results using the Canonical SMILES in PubChem and the 3D structure of the compounds. A molecule having a bioactivity score of more than 0.00 is most likely to exhibit considerable biological activities, while values  $-5.0$  to  $0.00$  are expected to be moderately active and if the score was less than  $-5.0$  it was presumed to be inactive. The results reveal that the physiological actions of different compounds might involve multiple mechanisms and could be due to the interactions with GPCR ligands, nuclear receptor ligands, and inhibit protease and other enzymes. The identified compounds showed better bioactivity scores than Imiquimod and Acetylsalicylic acid for all drug targets.

Therefore, numbers of potential compounds and active human targets with their corresponding information of probability,  $p$ -VALUE, Max TC,  $p$ -value and score, and type information were retrieved, and are given in **Table 3**. Swiss targets of a molecule were predicted by identifying proteins with known ligands that are highly similar to the query molecule. In piperine target MAO-B has probability 1. As target prediction accuracy is affected by the molecule size probabilities were computed separately for each ligand size. In SEA data similarities were calculated for ligands and later successfully to drug target prediction. SEA calculates a raw score by summing up the Tanimoto similarity of the chemical structure. We found SEA and SLAP data on cinnamaldehyde and linolenic acid.

**Table 4.** SEA, SWISS, data of cinnamaldehyde and linolenic acid.

Name of compound	Target	Swiss target	SEA	
		Probability	$p$ -VALUE	Max TC
Cinnamaldehyde	TRPA1	1.0	2.819e-05	1.00
Linolenic acid	PPARG	0.739591175051	4.296e-09	1.00
	PPARA	0.739591175051	3.843e-08	1.00
	PPARD	0.739591175051	3.052e-06	0.85
	FABP4	0.714850037542	1.712e-07	0.79
	FFAR1	0.706805409756	0.000163	1.00
	PTGS1	0.665850737135	0.104	1.00
	FABP3	0.665850737135	6.282e-27	1.00
	OXER1	-	3.091e-62	1.00
	FFAR4	-	6.219e-11	1.00

### In Silico Comparisons With *Brugmansia Sauveolens* for Anti-Inflammatory Properties

We compared the above data with *B. suaveolens* plant phytoconstituents, including hyoscine, norhyoscine, atropine, and apohyoscine. The Pa value represents the likelihood of a compound exhibiting biological

activity, with values greater than 0.5 indicating strong potential. When analyzing **Table 5**, we observed that linolenic acid and cinnamaldehyde had Pa values greater than 0.5, suggesting good activity. In contrast, hyoscine, norhyoscine, atropine, and apohyoscine had Pa values below 0.5, indicating a lower probability of significant activity. While the plant phytoconstituents may still exhibit some biological effects in experimental conditions, their likelihood of demonstrating strong activity is comparatively lower. Further studies may be necessary to confirm their potential efficacy.

The molecular properties of the compound were calculated using Molinspiration Cheminformatics software and are presented in **Table 6**. The Molinspiration tool retrieves results using the Canonical SMILES in PubChem and the 3D structure of the compounds.

A molecule having a bioactivity score of more than 0.00 is most expected to show significant biological activities, while values  $-5.0$  to  $0.00$  are expected to be moderately active and if the score was less than  $-5.0$  it was presumed to be inactive. In **Table 6**, *B. suaveolens* chemical constituents showed a good value of GPCR ligand, Ion channel modulator, Kinase inhibitor nuclear receptor ligand, Protease inhibitor, and Enzyme inhibitor. The identified compounds showed better bioactivity scores than Imiquimod and Acetylsalicylic acid for all drug targets.

**Table 5.** Biological activity spectrum of compounds - Pa (Active); Pi (Inactive) of *B. Sauveolens* chemical constituents.

Name of compounds	Pa	Pi	Activity
Hyoscine	0,338	0,130	Anti-inflammatory
	0,292	0,092	Anti-inflammatory, ophthalmic
Norhyoscine	0,300	0,079	Anti-inflammatory, ophthalmic
	0,289	0,171	Anti-inflammatory
Atropine	0,200	0,189	Anti-inflammatory, intestinal
	0,338	0,037	Anti-inflammatory, ophthalmic
	0,379	0,107	Anti-inflammatory
	0,202	0,099	Non-steroidal, anti-inflammatory agent
Norhyoscine	0,204	0,183	Anti-inflammatory, intestinal
	0,300	0,079	Anti-inflammatory, ophthalmic
	0,289	0,171	Anti-inflammatory
	0,200	0,189	Anti-inflammatory, intestinal

**Table 6.** Bioactivity scores of *B. saueolens* chemical constituents.

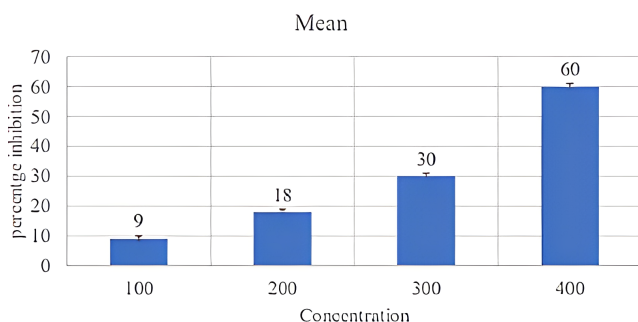
Drug/compound	GPCR ligand	Ion channel modulator	Kinase inhibitor	Nuclear receptor ligand	Protease inhibitor	Enzyme inhibitor
Hyoscyne	0.58	0.23	0.06	0.11	0.28	0.35
Norhyoscyne	0.51	0.28	0.06	0.16	0.47	0.48
Atropine	0.44	0.26	-0.09	-0.06	0.13	0.21
Noratropine	0.43	0.35	-0.06	-0.10	0.35	0.35
Apohyoscyne	0.48	0.50	-0.08	0.31	0.17	0.33

### In Vitro Anti-inflammatory Activities (Membrane Stabilization Assay)

The biological potential of plant extract fractions was studied for their ability to stabilize rat RBC membrane lyses in normal saline. The results obtained were also compared with standard anti-inflammatory agent aspirin based on the % protection. Initially, we decided aspirin was used as standard in the membrane stabilization assay and we performed a pilot experiment for aspirin to choose the correct dose of aspirin. We decide on the concentration for the following assay (**Table 7, Figure 5**)

**Table 7.** Membrane stabilization assay of aspirin for dose selection.

Concentration (normal saline)	Mean	SD
100 µg/mL	9	6.350853
200 µg/mL	18	8.888194
300 µg/mL	30	8.717798
400 µg/mL	60	3.605551

**Figure 5.** Effect of aspirin on RBC membrane.

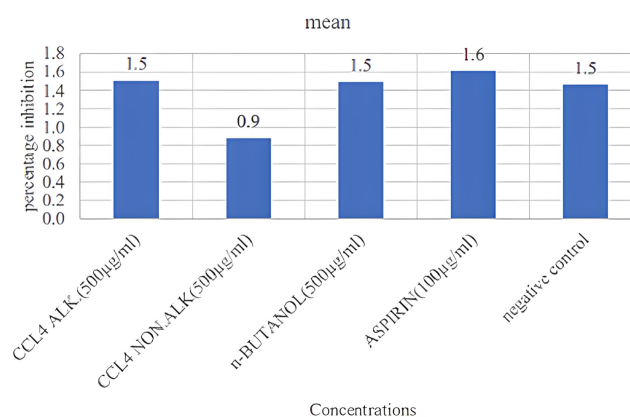
The fractions were analysed at selected concentrations (500 µg/mL) for anti-inflammatory

activity with membrane stabilization methods. Normal saline 500 µg/mL and aspirin 100 µg/mL were used as a negative and positive control (**Table 8**).

After that we decided to take only one fraction in different concentrations. So, we took CCl<sub>4</sub> alkaloidal concentration in 100, 200, and 300 µg/mL, aspirin at 100 µg/mL and normal saline used as a negative control. But we performed only N=1 data in this (**Figure 6 and Table 9**).

**Table 8.** Membrane stabilization assay of aspirin after dose selection.

Concentrations	Mean	SD
CCL4 ALK. (500µg/mL)	1.5	1.21
CCL4 NON.ALK (500µg/mL)	0.9	1.12
n-BUTANOL (500µg/mL)	1.5	1.23
ASPIRIN (100µg/mL)	1.6	0.74
Negative control	1.5	1.26

**Figure 6.** Effect of different extracts on inhibition of membrane stabilization.**Table 9.** Effect of CCl<sub>4</sub> alkaloidal fraction in red blood cells compared to the control group used as aspirin.

Concentration	Sample 1	Sample 2	mean	control- sample	control - sample /control	*100
100 µg/mL	1.396	1.407	1.4	0.51	0.267	26.7
200 µg/mL	1.243	1.236	1.23	0.68	0.356	35.6
300 µg/mL	0.705	0.691	0.69	1.22	0.638	63.87
Aspirin 100 µg/mL	1.306	1.289	1.29	0.62	0.324	32.46
Negative control	1.901	1.925	1.91	-	-	-



## Conclusions

Firstly, we used *in silico* methods for drug discovery in the natural plant during the previous decade. We choose three chemical constituents piperine, cinnamic aldehyde, and linoleic acid. After that, we identified structural activity by using bioinformatics tools such as PASS Online, Molinspiration, SEA, SWISS, and SLAP data. We compared the data of these three Phytoconstituents with *B. sauveolens* Phytoconstituents. On the other side, we have assessed the fractions of this plants and its *in vitro* anti-inflammatory assay. Based on the *in silico* and *in vitro* study, we conclude that *B. sauveolens* has the potential for application in the treatment of asthma. Further studies such as *in vivo* studies are required to validate the present findings.

## Declarations

### Author Informations

#### Shouvik Kumar Nandy ✉

**Affiliation:** Department of Pharmacology, School of Pharmacy, Techno India University, Kolkata – 700091, India.

**Contribution:** Conceptualization, Data Curation, Formal analysis, Investigation, Methodology, Software, Visualization, Writing - Original Draft, Writing - Review & Editing.

#### Shikha Thakur

**Affiliation:** Department of Pharmacology, School of Pharmacy, Shoolini University, Solan- 173212, India.

**Contribution:** Conceptualization, Data Curation, Formal analysis, Investigation, Methodology, Project administration, Resources, Supervision, Validation, Visualization, Writing - Original Draft, Writing - Review & Editing.

### Acknowledgment

The authors are thankful to Techno India University and Shoolini University, for supporting its publication. The authors performed the study in their laboratory, and data was collected through online servers and software.

### Conflict of Interest

The authors declare no conflicting interest.

### Data Availability

The unpublished data is available upon request to the corresponding author.

### Ethics Statement

Not applicable.

### Funding Information

Not applicable.

## References

1. Pawankar R, Canonica GW, Holgate ST, Lockey RF. Allergic diseases and asthma: a major global health concern. *Curr Opin Allergy Clin Immunol.* (2012) 12(1):39-41.
2. Lambrecht BN, Hammad H. The immunology of asthma. *Nat Immunol.* (2015) 16(1):45-56.
3. Martonen T, Fleming J, Schroeter J, Conway J, Hwang D. In- silico modeling of asthma. *Adv Drug Deliv Rev.* (2003) 55(7):829-49.
4. Majumdar S, Ghosh A, Saha S. Modulating interleukins and their receptors interactions with small chemicals using in- silico approach for asthma. *Curr Top Med Chem.* (2018) 18(13):1123-34.
5. Huang S, Wiszniewski L, Derouette JP, Constant S. In vitro organ culture models of asthma. *Drug Discov. Today Dis Models.* (2009) 6(4):137-44.
6. Xu P, Wang L, Chen D, Feng M, Lu Y, Chen R, Qiu C, Li J. The application of proteomics in the diagnosis and treatment of bronchial asthma. *Ann Transl Med.* (2020) 8(4): 132; 1-7.
7. Jeyasri R, Muthuramalingam P, Suba V, Ramesh M, Chen JT. Bacopa monnieri and their bioactive compounds inferred multi-target treatment strategy for neurological diseases: A cheminformatics and system pharmacology approach. *Biomolecules.* (2020) 10(4):536.
8. Romano JD, Tatonetti NP. Informatics and computational methods in natural product drug discovery: a review and perspectives. *Front Genet.* (2019) 10:368.
9. Petricevich VL, Salinas-Sánchez DO, Avilés-Montes D, Sotelo-Leyva C, Abarca-Vargas R. Chemical compounds, the pharmacological and toxicological activity of *Brugmansia suaveolens*: a review. *Plants.* (2020) 9(9):1161.
10. Chellemi DO, Webster CG, Baker CA, Annamalai M, Achor D, Adkins S. Widespread occurrence and low genetic diversity of Colombian datura virus in *Brugmansia* suggest an anthropogenic role in virus selection and spread. *Plant Dis.* (2011) 95(6):755-61.
11. Freitas AV, Trigo JR, Brown KS, Witte L, Hartmann T, Barata LE. Tropane and pyrrolizidine alkaloids in the ithomiines *Placidula euryanassa* and *Miraleria cymothoe* (Lepidoptera: Nymphalidae). *Chemoecology.* (1996) 7:61-7.
12. Sakunthala P, Charles A, Kesavan D, Ramani VA. Phytochemical screening and adsorption studies of *Brugmansia suaveolens*. *Chem Sci Rev Lett.* (2013) 29:319-22.
13. Nandakumar A, Mayil Vaganan M, Sundararaju P,

Udayakumar R. Phytochemical analysis and nematocidal activity of ethanolic leaf extracts of *Datura metel*, *Datura innoxia* and *Brugmansia suaveolens* against *Meloidogyne incognita*. *Asian J Biol.* (2017) 2 (4): 1-11.

14. Stashenko EE, Martinez JR. Sampling flower scent for chromatographic analysis. *J Sep Sci.* (2008) 31(11):2022-31.

15. Mai NT. Investigation on chemical constituents of the *Brugmansia suaveolens* flowers. *J Multi discip Eng Sci Technol.* (2019) 6:10021-4.

16. Pundir S, Shukla MK, Singh A, Chauhan R, Lal UR, Ali A, Kumar D. A comprehensive review on angel's trumpet (*Brugmansia suaveolens*). *S Afr J Bot.* (2022) 151: 266-274.

17. Taur DJ, Patil RY. Some medicinal plants with anti-asthmatic potential: a current status. *Asian Pac J Trop Biomed.* (2011) 1(5):413-8.

18. Khan T, Dixit S, Ahmad R, Raza S, Azad I, Joshi S, Khan AR. Molecular docking, PASS analysis, bioactivity score prediction, synthesis, characterization, and

biological activity evaluation of a functionalized 2-butanone those micarbazone ligand and its complexes. *J Chem Biol.* (2017) 10:91-104.

19. Khan T, Ahmad R, Azad I, Raza S, Joshi S, Khan AR. Computer-aided drug design and virtual screening of targeted combinatorial libraries of mixed-ligand transition metal complexes of 2-butanone that micarbazone. *Comput Biol Chem.* (2018) 75:178-95.

20. Schenone M, Dančák V, Wagner BK, Clemons PA. Target identification and mechanism of action in chemical biology and drug discovery. *Nat Chem Biol.* (2013) 9(4):232-40.

21. Petricevich VL, Salinas-Sanchez DO, Aviles-Montes D, Sotelo-Leyva C, Abarca-Vargas R. Chemical compounds, pharmacological and toxicological activity of *Brugmansia suaveolens*: a review. *Plants.* 2020; 9(9):1161.

22. Sarveswaran R, Jayasuriya WJ, Suresh TS. In vitro assays to investigate the anti-inflammatory activity of herbal extracts a review. *World J. Pharm. Res.* (2017) 6(17) 131- 141.

## Publish with us

In ETFLIN, we adopt the best and latest technology in publishing to ensure the widespread and accessibility of our content. Our manuscript management system is fully online and easy to use.

Click this to submit your article:

<https://etflin.com/#loginmodal>



This open access article is distributed according to the rules and regulations of the Creative Commons Attribution (CC BY) which is licensed under a [Creative Commons Attribution 4.0 International License](https://creativecommons.org/licenses/by/4.0/).

**How to cite:** Nandy, S.K., Thakur, S.. In Vitro and In Silico Evaluation of *Brugmansia suaveolens*' Ability to Treat Asthma. *Sciences of Phytochemistry.* 2023; 2(1):121-130